

DFG Tuning MK7/7.5 Cat-back Installation Guide

Tools Required:

- 13mm Socket, 15mm Socket, Pry Bar, Pillars, Penetrating Lubricant, (2) Jack Stands, (1) Floor Jack
 - We recommend a friend or jack support for removal and installation
-

Downpipe Components: *Please make sure you have the below parts before starting!*

- (1) Front Muffler Section
- (1) Mid-section
- (1) Y-Pipe
- (1) Left Tail-Pipe
- (1) Right Tail-Pipe
- (2) Compression Clamps
- (2) Band Clamps

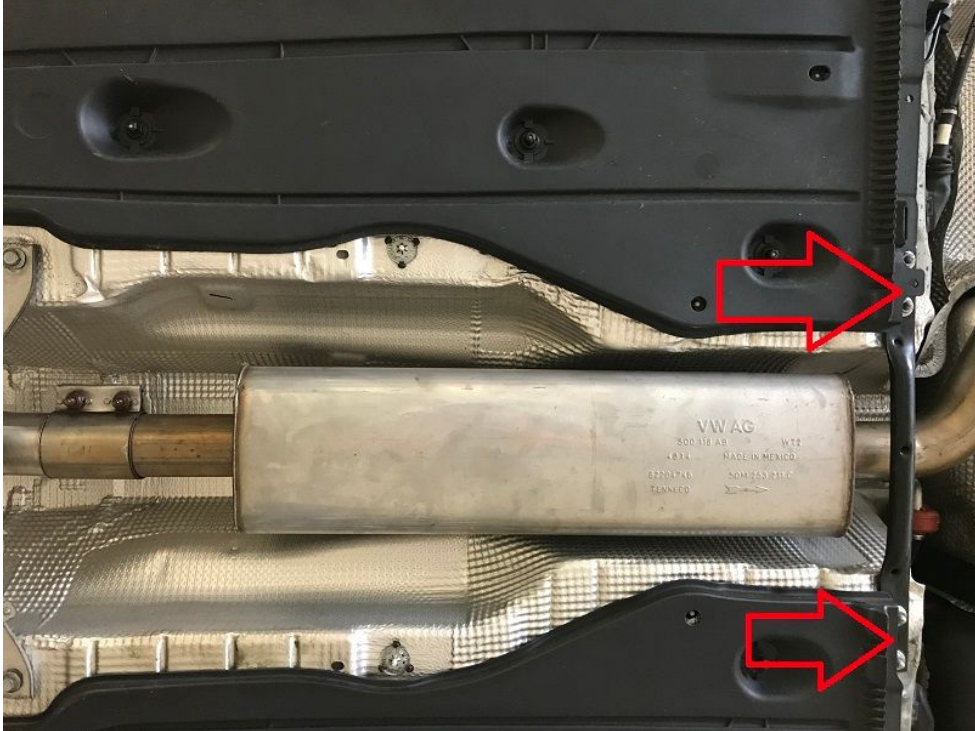


Notes:

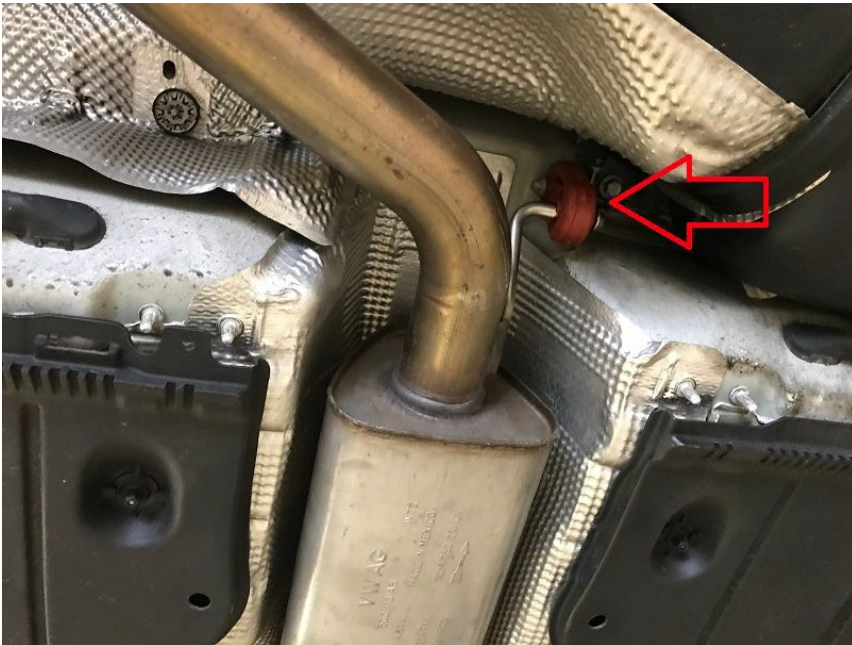
- Due to the space constraints, DFG Tuning recommends professional installation. If you do not have access to a lift make sure you **properly secure the car on jack stands before working underneath the vehicle.**
 - This guide is based on a 2015 GTI. Please make sure the car is properly cooled down as heat can be stored in the exhaust components well after the vehicle is shut off
 - MK7 to 7.5 system difference is the length of the exhaust tips.
-

Removing The Stock Cat-Back Exhaust

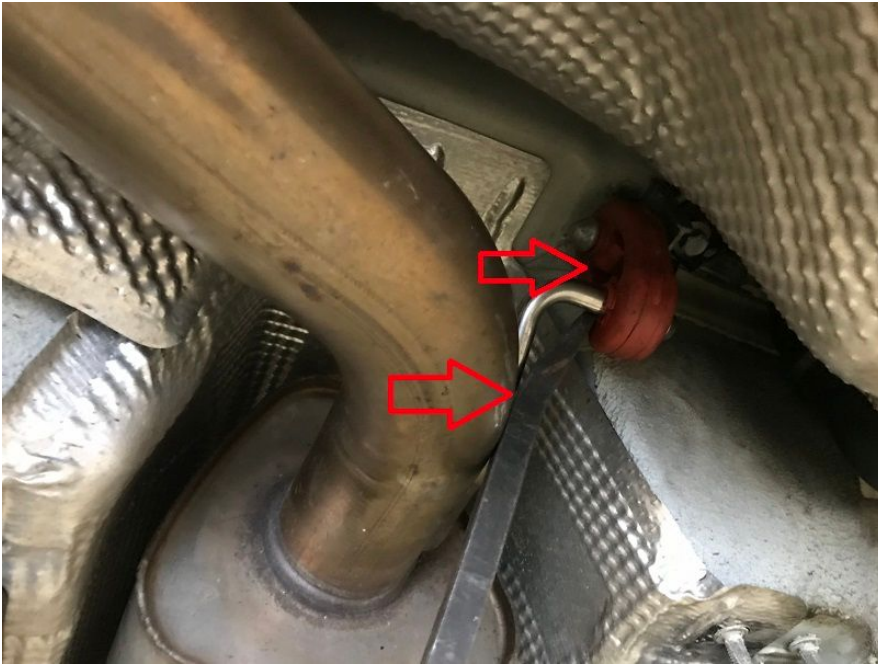
1. Start by properly securing the car on a lift or jack stands.
2. Locate and remove the (4) 13mm bolts holding on the rear center cross brace



3. Pry off the forward exhaust hanger
a.



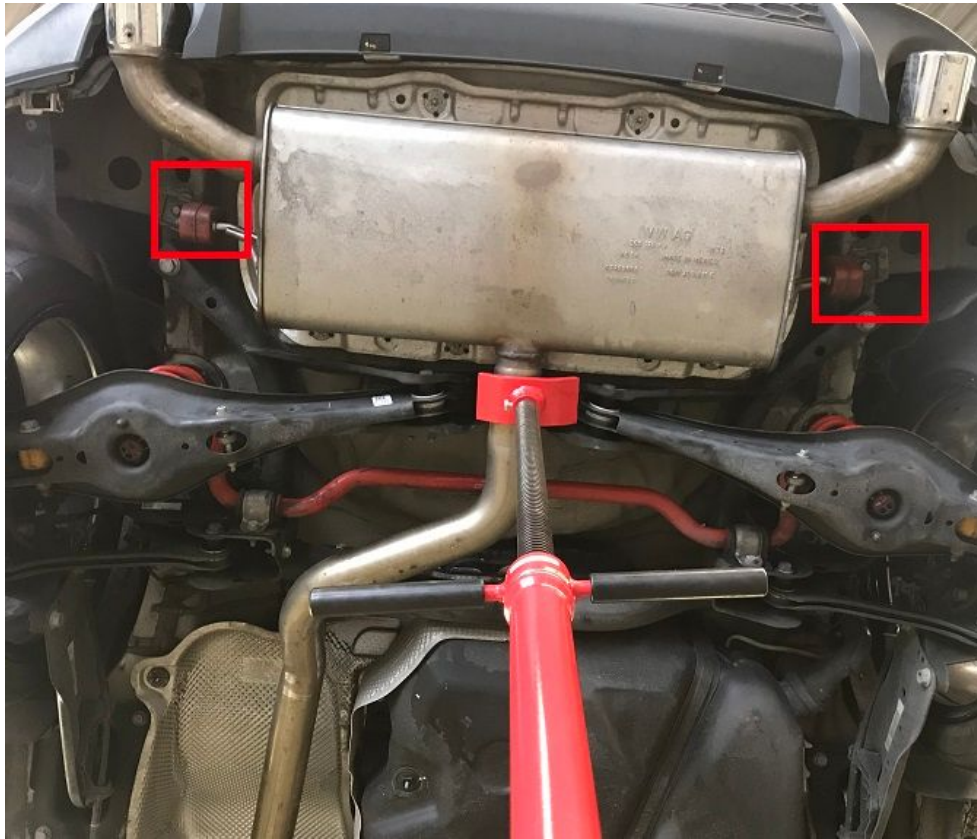
- b. Use the pry bar to free exhaust



4. Have a friend hold the muffler or support the muffler using a jack



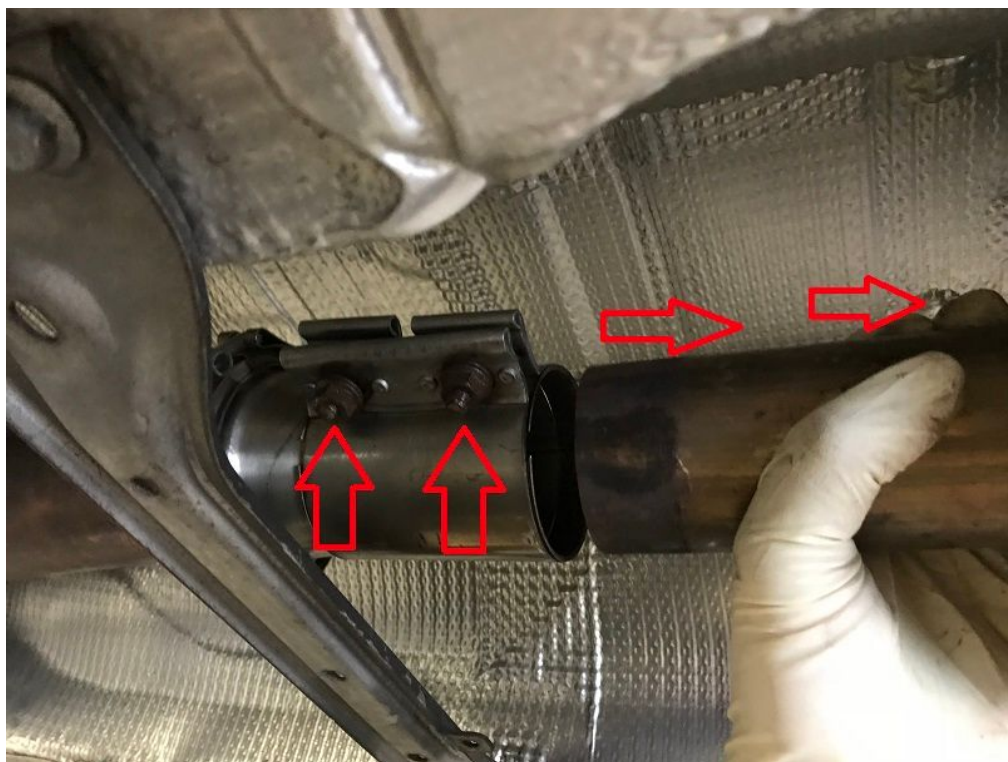
5. Once supported unbolt both rear exhaust hangers. Each hanger is held in place by a 13mm bolt
 - a. Locate the two rear exhaust hangers



- b. Remove the 13mm bolts on each side



6. With the muffler now supported, loosen the center band clamp which is held on by two 13mm nuts and carefully remove the stock cat-back system



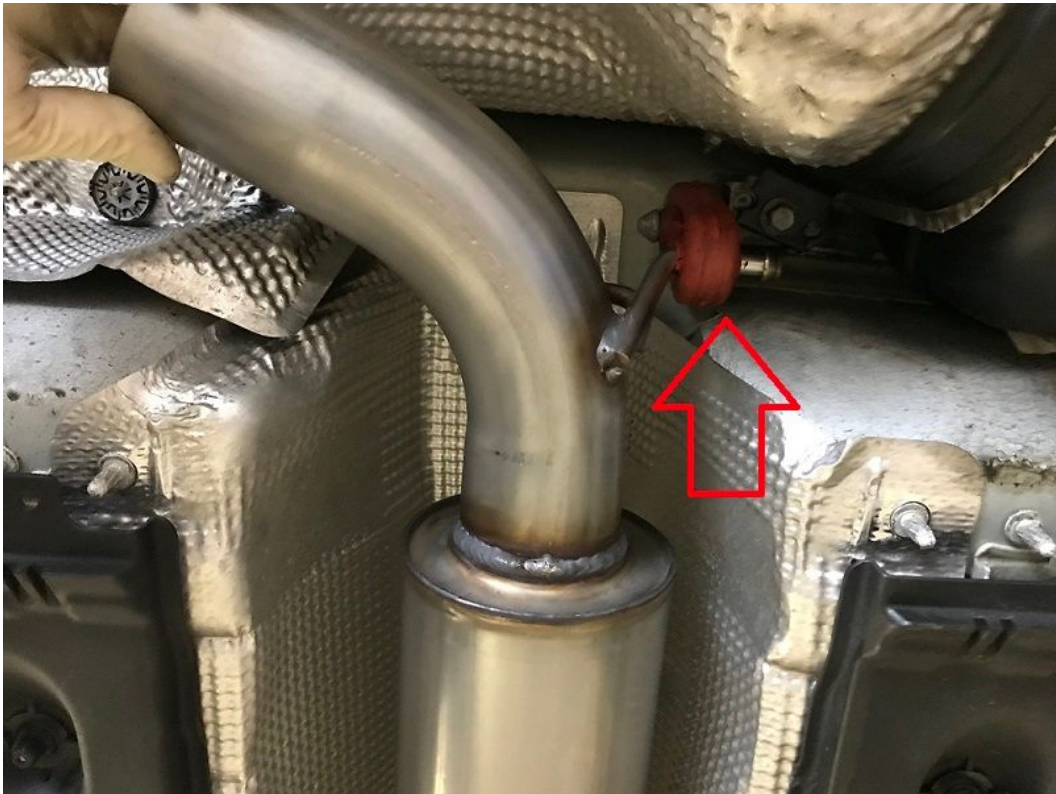
DFG Tuning Cat-Back Assembly

The tips will be adjusted after the system is installed

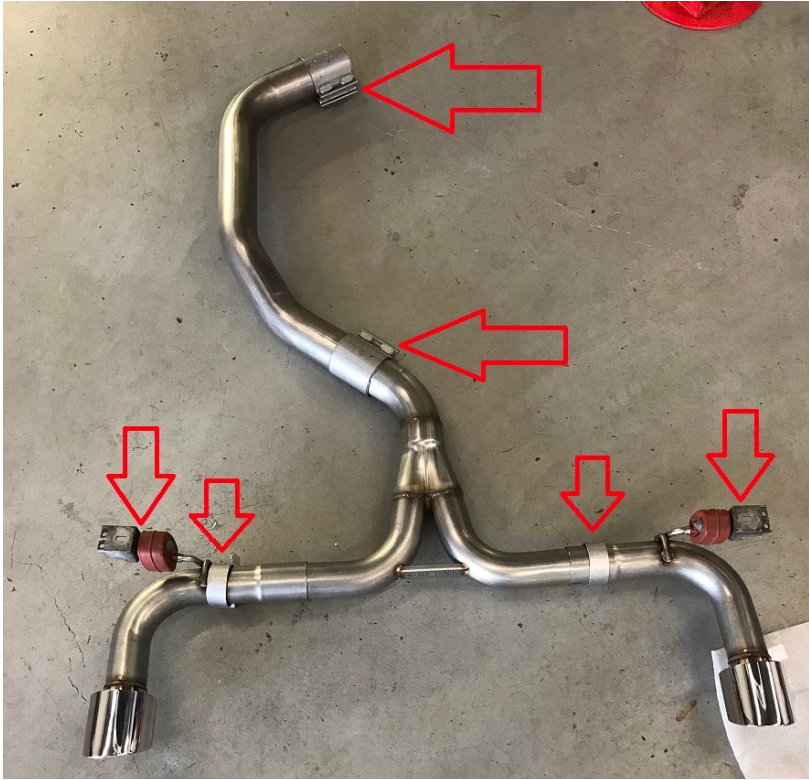
1. Leave the factory band clamp on the factory downpipe.
2. Locate the DFG Tuning center muffler section and install onto the vehicle by sliding the reducer section into the factory band clamp and attaching the exhaust hanger



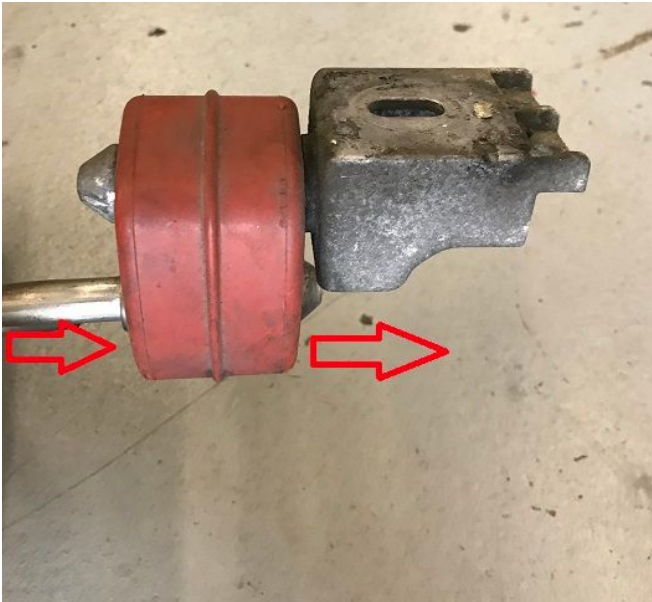
- a. If the exhaust hanger is difficult to install use penetrating oil to lubricate the exhaust hangers



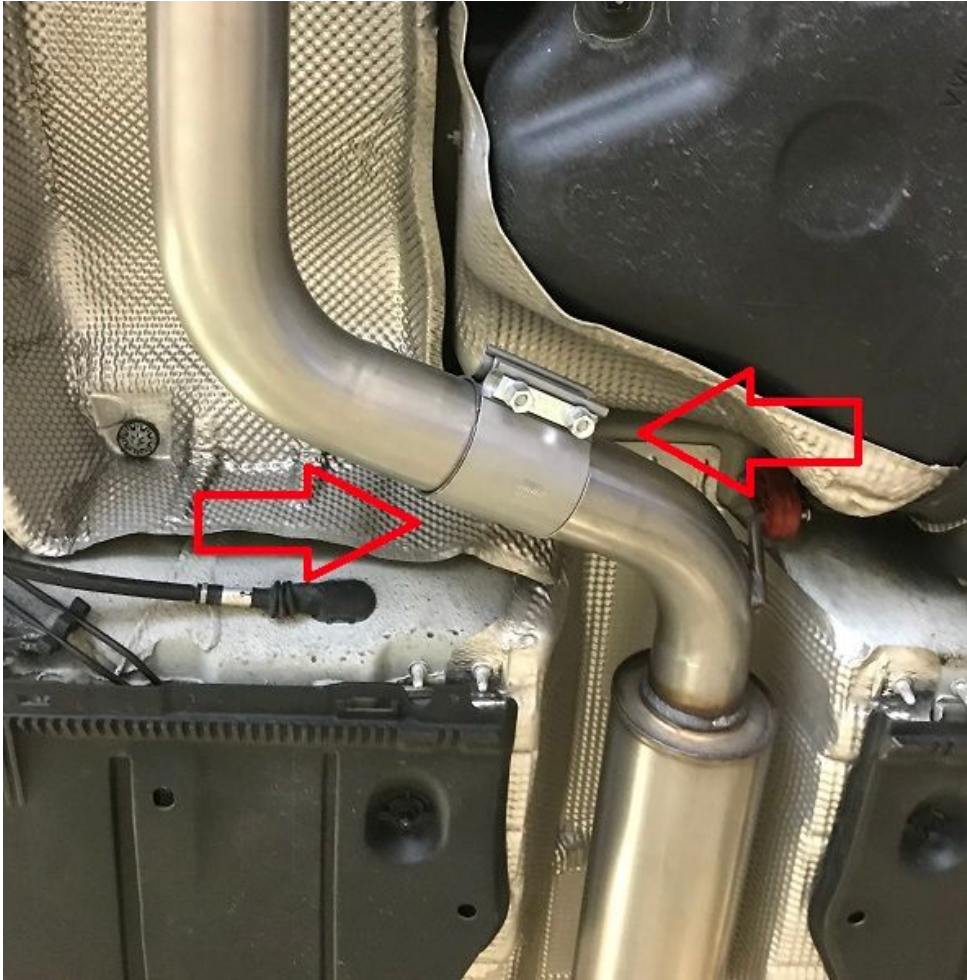
3. Lay the factory exhaust system on the ground and assemble the rest of the DFG Tuning Cat-back next to your factory system.
 - a. Assemble the system as shown below



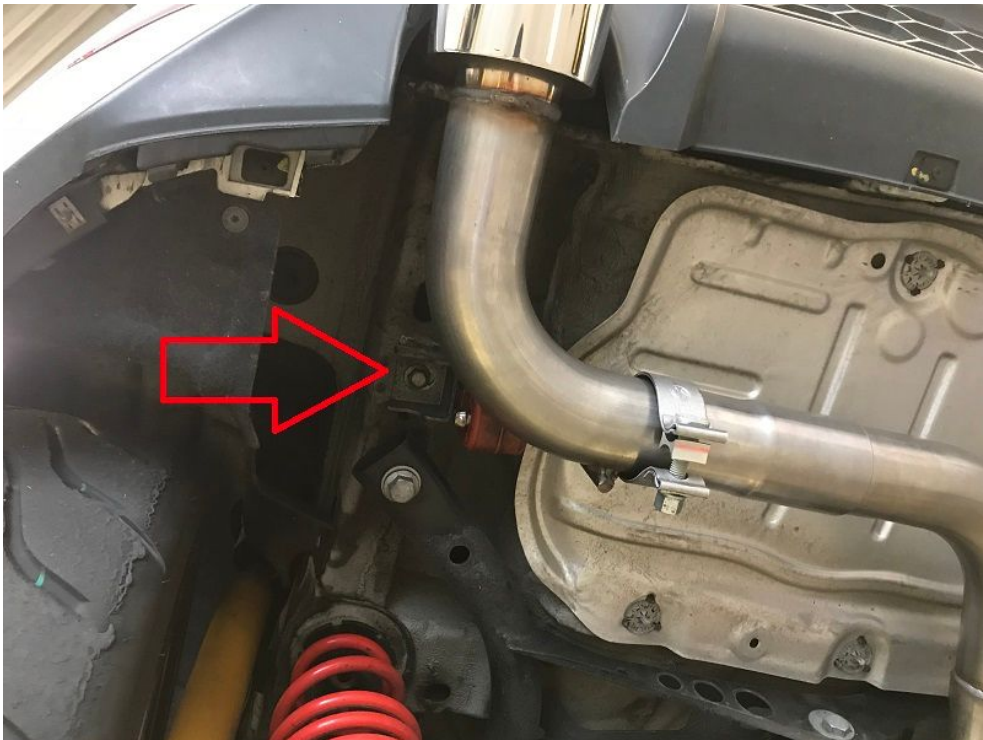
- b. Two large compression clamps are installed with the bolts facing downward
- c. Two smaller band clamps installed on the tip sections with bolts facing downward
- d. Slide all the sections together so the rest of the system can be lifted as one piece onto the vehicle
- e. Move back to the factory exhaust system and locate the exhaust hangers still attached to the system, Remove these hangers and install them onto the DFG Tuning Exhaust Tips

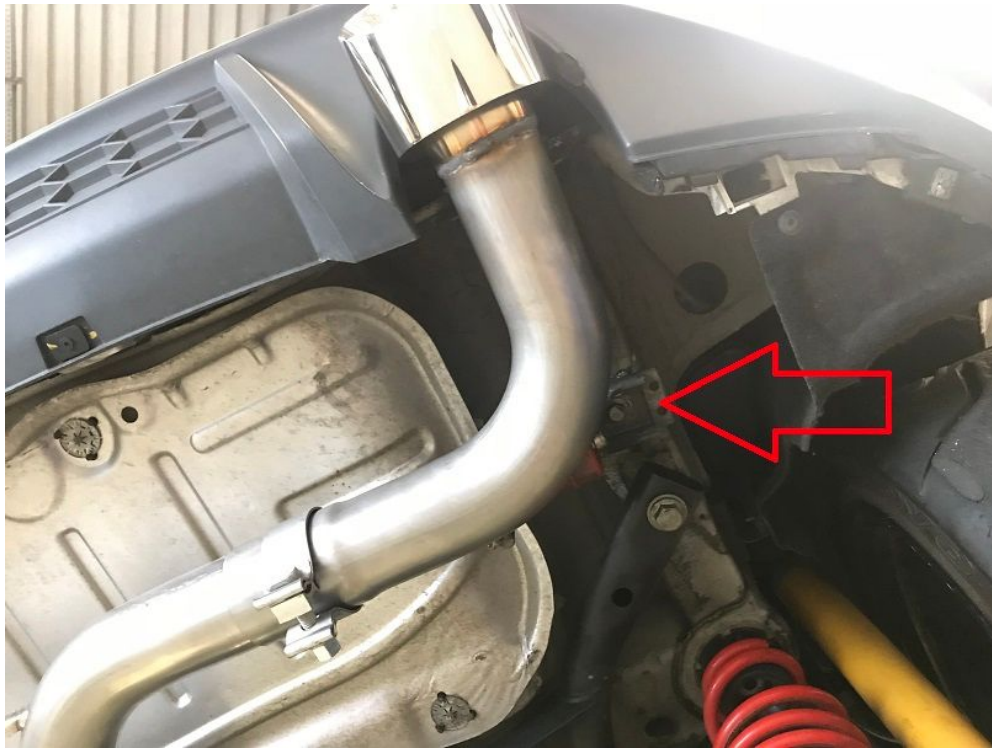


4. Lift the now assembled system with a friend and slide the midsection pipe onto the muffler section which is already attached to the vehicle.

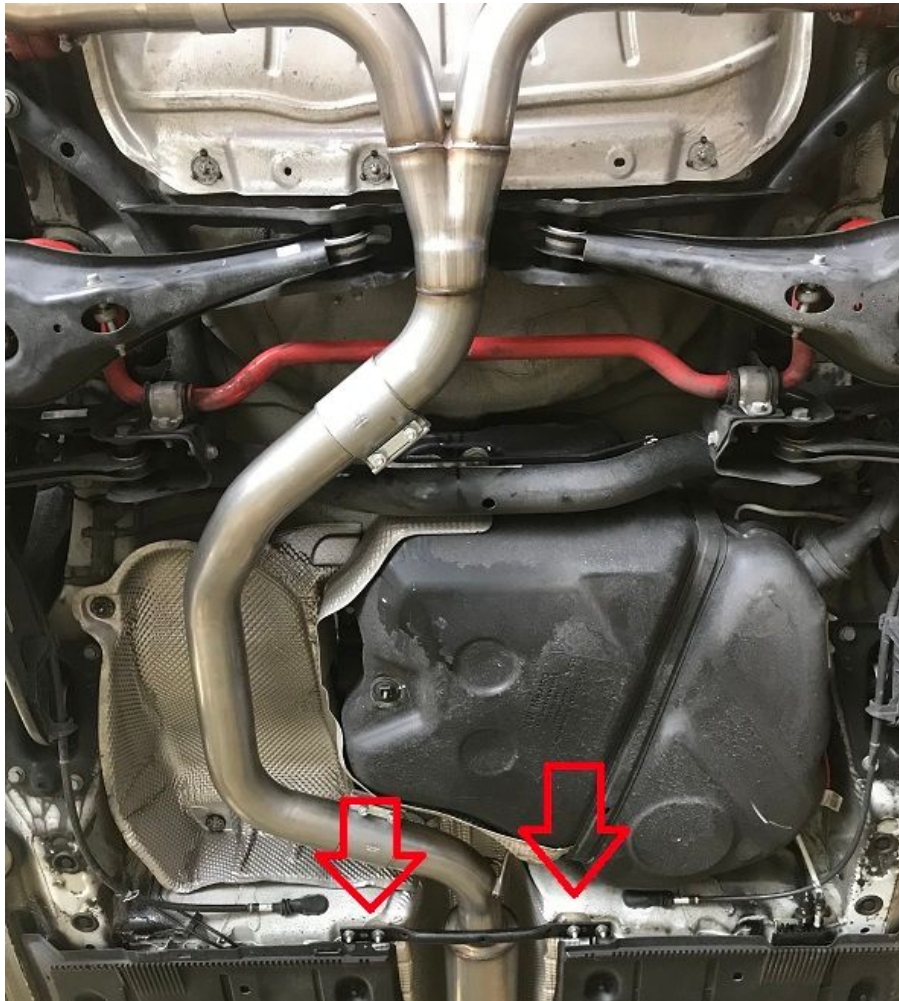


- a. While the system is still supported, move back and re-install the exhaust hangers into the body reusing the factory 13mm bolts.

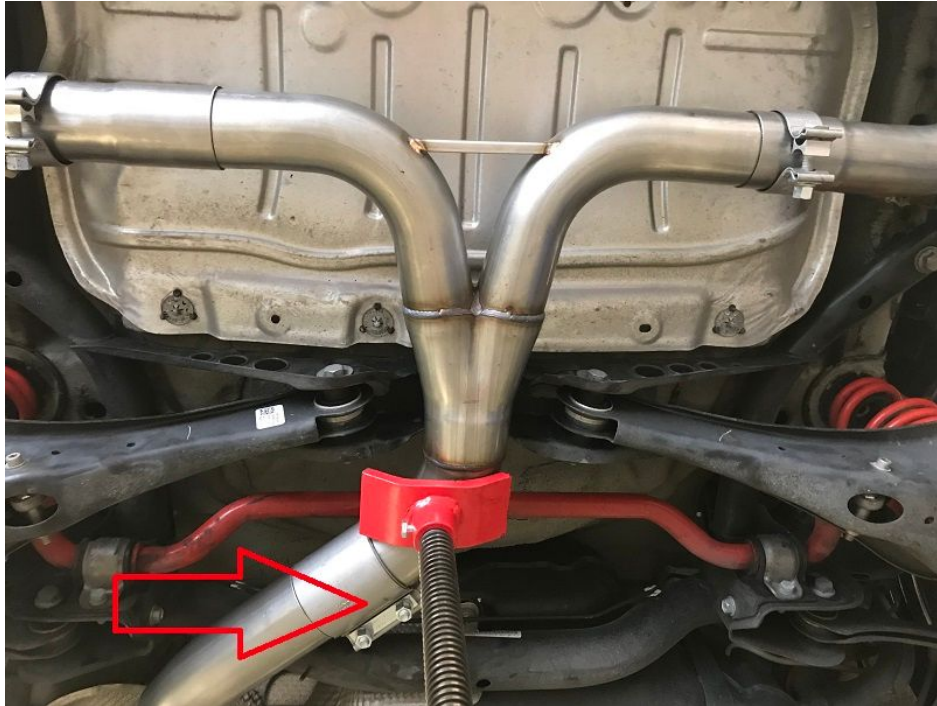




5. Re-install the rear crossbar using the (4) 13mm factory nuts



6. Support or hold the system by the Y-pipe so you can tighten the compression clamps
 - a. Push the system into place and check for clearance before tightening down the clamps.



- b. This will require two people as the system needs to be supported in the proper location as both sets of clamps are tightened down.



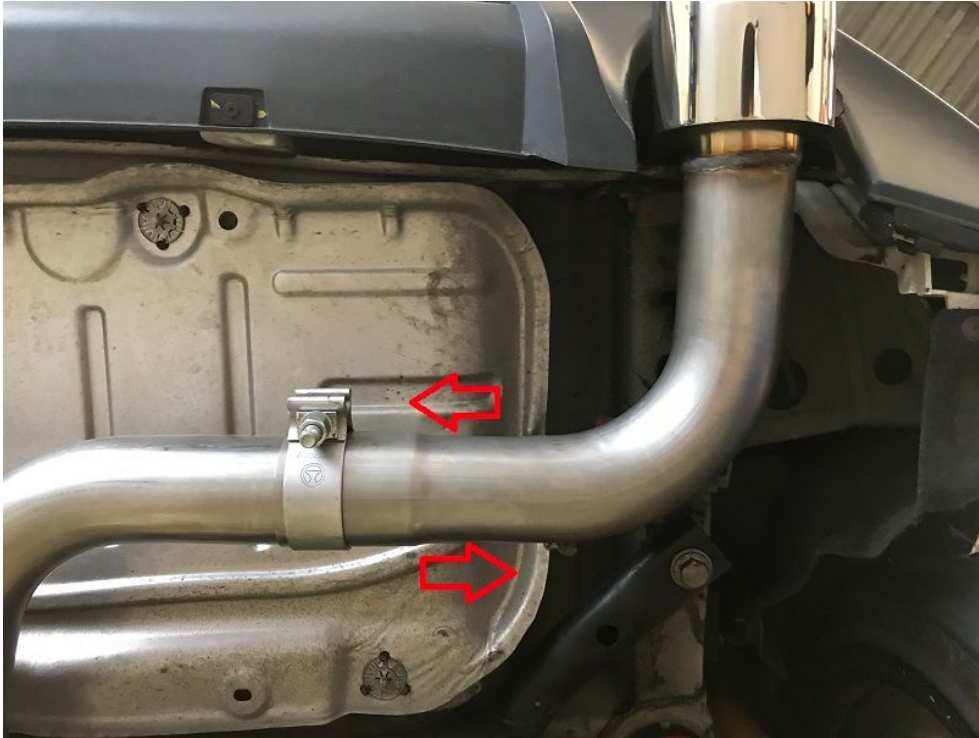
- c. Once in the proper location tighten down the two clamps using a 15mm socket.

7. Move to the factory band clamp and push up on the system while tightening down the (2) 13mm nuts to create the proper clearance.

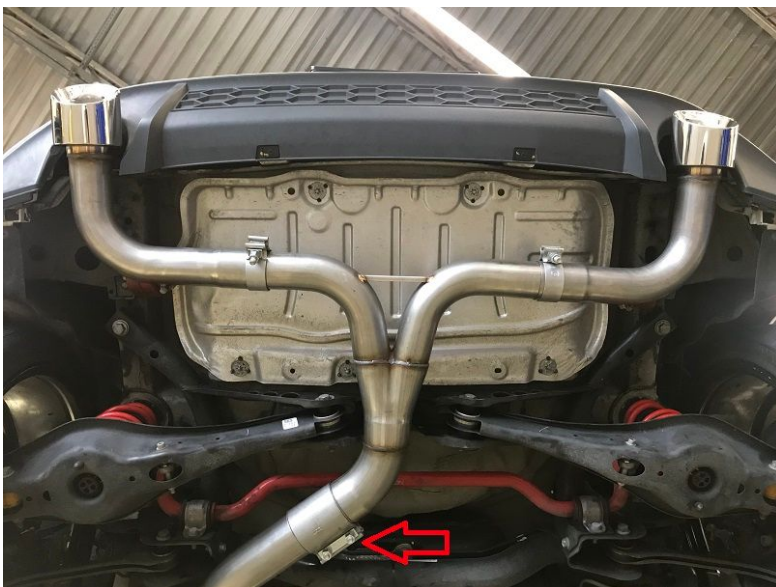


DFG Tuning Cat-Back Tip Adjustment

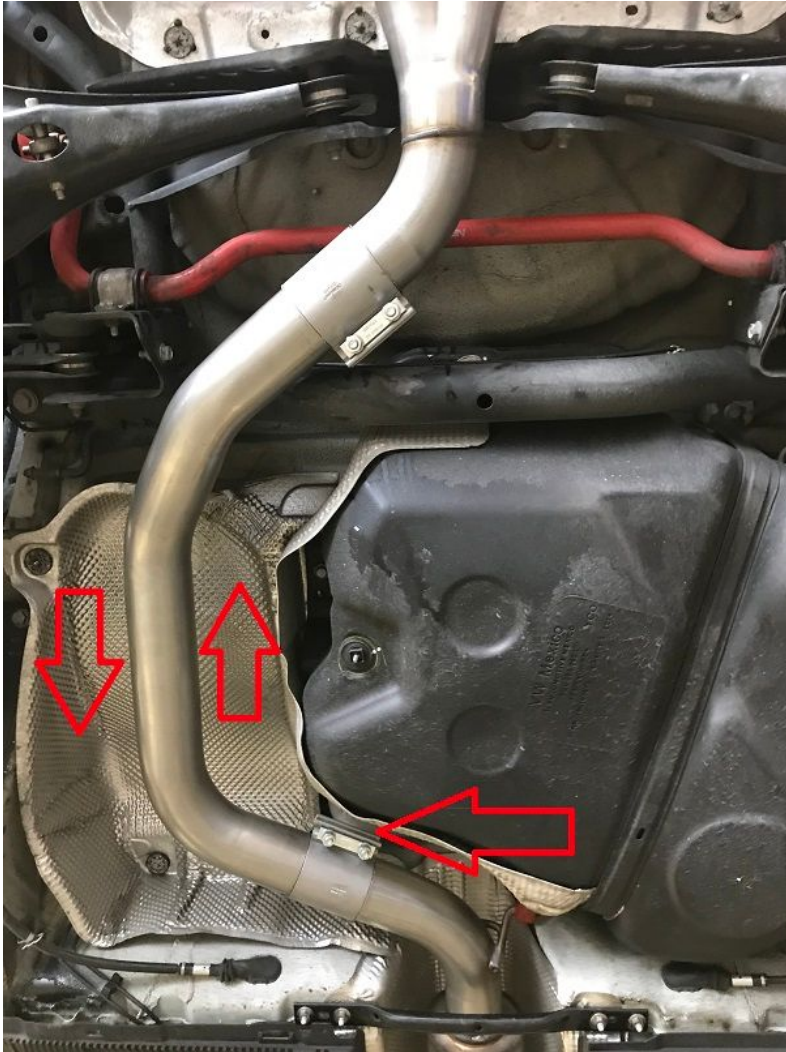
1. The DFG Tuning Cat-Back system can be adjusted to center the tips both side to side and front to back.
2. For Side to Side Adjustment:
 - a. Start on the passenger side exhaust tip
 - b. Center the tip in the valance by sliding the tip section further in or out on the Y-Pipe. Once centered tighten down the band clamp using a 15mm socket.



- c. Repeat this process for the driver's side exhaust tip
3. For In & Out Adjustment:
 - a. Loosen the compression clamp at the end of the Y-Pipe and move the Y-Pipe itself further in or out to adjust the tips.



- b. If you need more adjustment loosen the forward most compression clamp and move the pipe in or out to create the desired tip alignment.



4. Now re-tighten all exhaust bolts
5. Start up the system and check for leaks
6. Re-tighten bolts after 25 miles

It may smell like something is burning or produce smoke for a short period of time after the initial start-up.